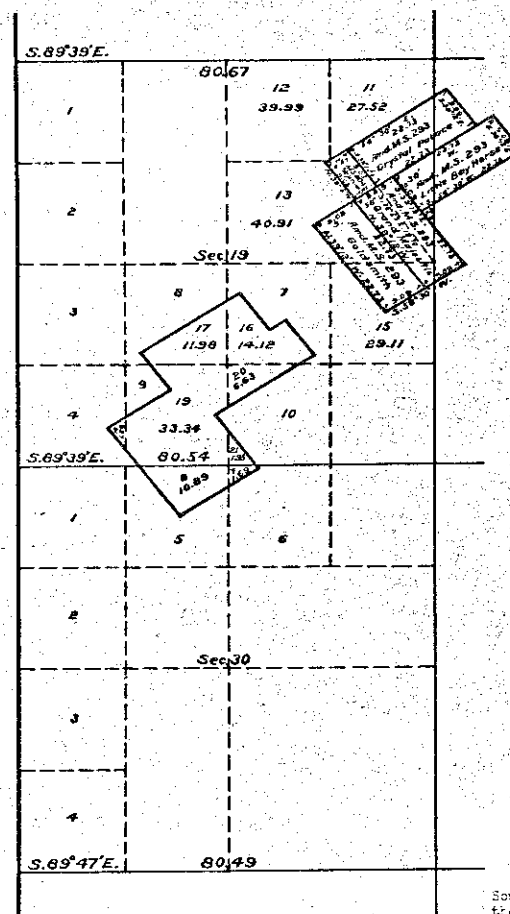


202

Amended Plat
of
Sections 19 and 30 — T.8 S. R. 44 E. of the Willamette Meridian, Oregon.
Scale 20 chains to an inch.



U.S. Surveyor General's Office,
Portland, Oregon, Dec. 13, 1920.

The above amended plat of Sections 19 and 30, Township No. 8 South, Range No. 44 East of the Willamette Meridian, Oregon; made for the purpose of showing the lottings and areas of the land in said sections formerly enclosed within the boundaries of Mineral Survey No. 293, Crystal Palace Consolidated Quartz Mine in its erroneous position and also the lottings and areas in Section 19 around Mineral Survey No. 804 Neptune Lode and Amended Mineral Survey No. 293, Crystal Palace Consolidated Quartz Mine in its correct position; is prepared in accordance with instructions from the Commissioner of the General Land Office contained in letter "N" (GAL) dated Dec. 2, 1920.

Edward M. Smith
U.S. Surveyor General of Oregon.

RECEIVED BY THE HON. COMMISSIONER G. L. O. February 3, 1921